



SHOPPING CENTER EXPANSION - NEW CONSTRUCTION!

1,500 SQ. FT. TO 7,000 SQ. FT. AVAILABLE at PRISCILLA TOWNE CENTER

Restaurant & Retail Space for Lease in Turnersville!

5101 Route 42, Washington Township, NJ



Store Sizes:

- 1,500 Sq. ft.
- 3,000 Sq. ft.
- 4,500 Sq. ft.
- 7,000 Sq. ft.

Population:

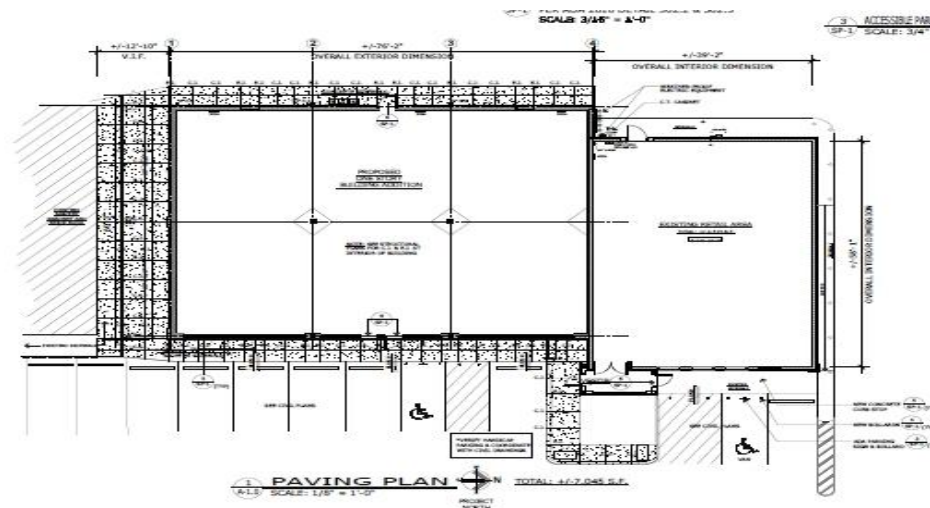
- 1 Mile: 7,290
- 3 Miles: 67,742
- 5 Miles: 174,768

Daytime Population:

- 1 Mile: 6,531
- 3 Miles: 57,258
- 5 Miles: 140,959

Median Household Income:

- 1 Mile: \$79,370
- 3 Miles: \$88,792
- 5 Miles: \$75,728

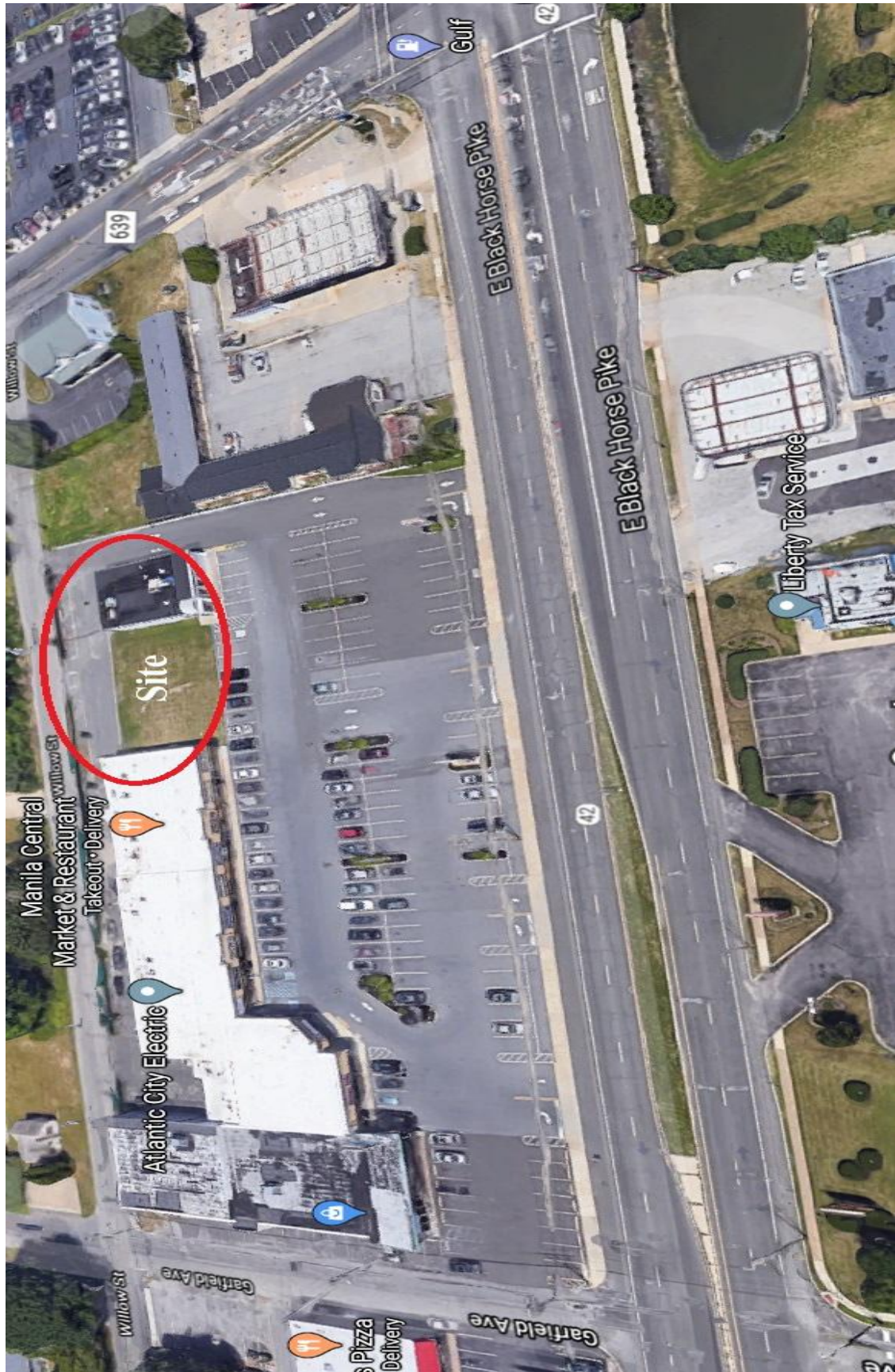


NOTES:

- Newly Constructed Space
- Stores size from 1,500 sf
- Excellent Access & Visibility
- Route 42 & Ganttown Road
- New Pylon Signage
- Robust retail area

Contact:

Marc Raiken: mraiken@f-mcb.com (856) 489-8887



Disclaimer: The information in this correspondence is deemed correct and accurate from the owner and other sources from which it was obtained. All information is subject to changes, errors, omissions and removal from the market without notice.