



SHOPPING CENTER EXPANSION - NEW CONSTRUCTION!
2,550 SQ. FT. AVAILABLE at PRISCILLA TOWNE CENTER

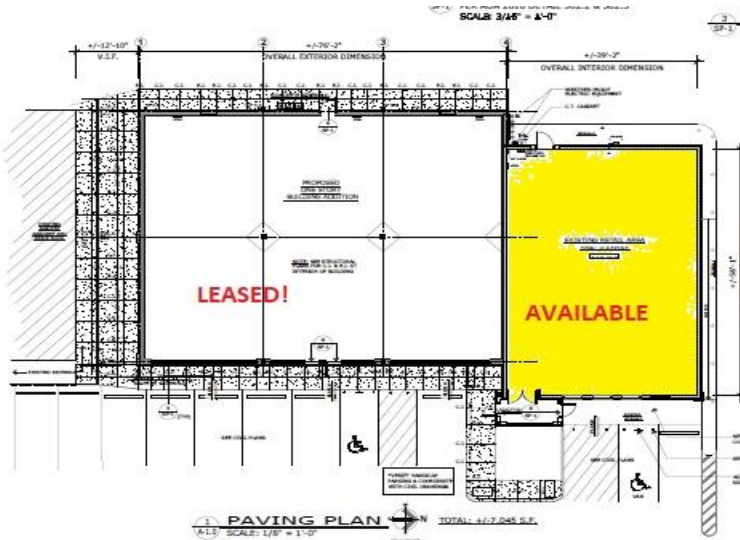
Restaurant or Retail Space for Lease in Turnersville!
5101 Route 42, Washington Township, NJ



Store Size:
2,550 Sq. Ft.

Population:
1 Mile: 7,290
3 Miles: 67,742
5 Miles: 174,768

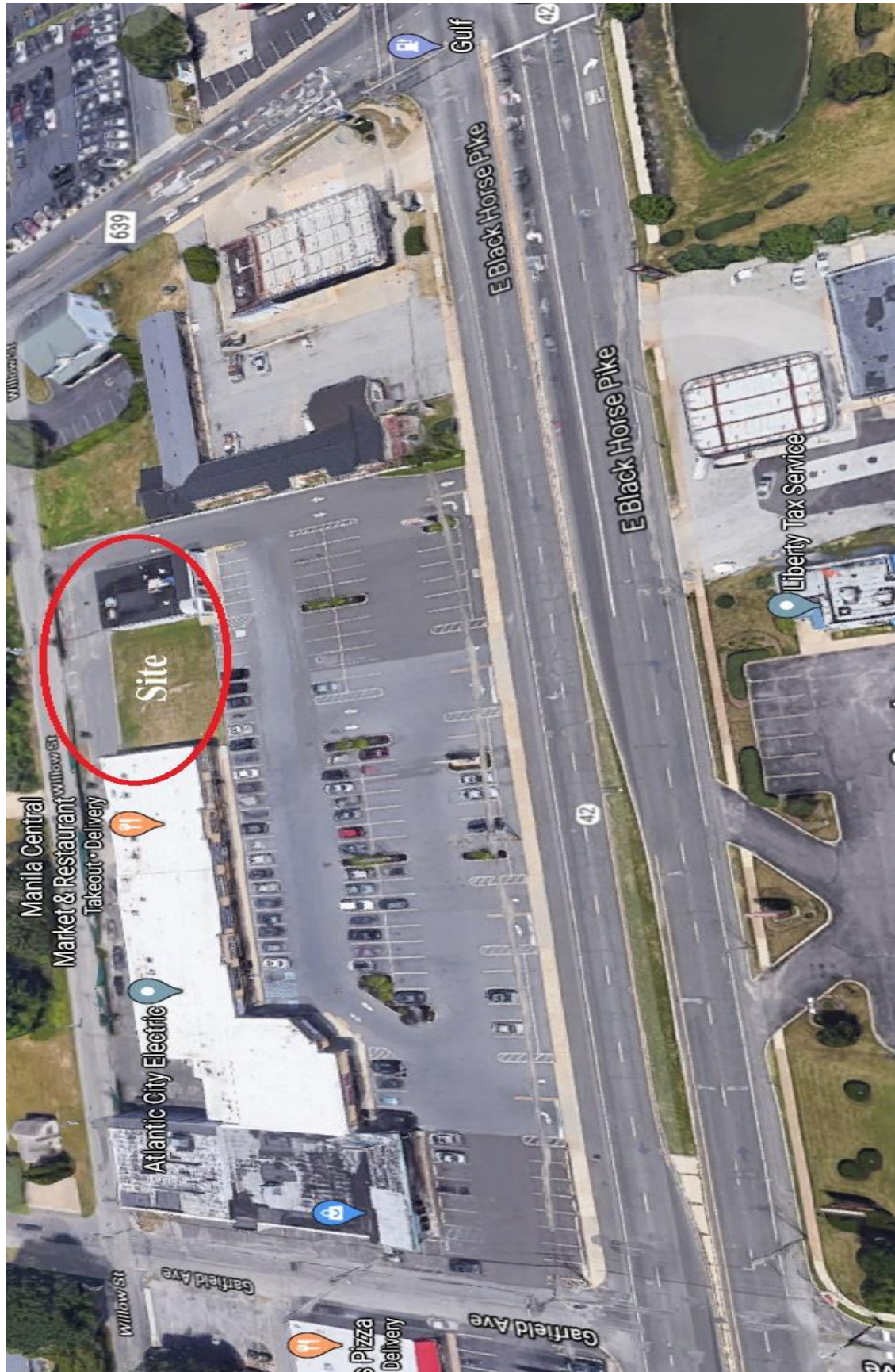
Median Household Income:
1 Mile: \$79,370
3 Miles: \$88,792
5 Miles: \$75,728



NOTES:

- Newly Constructed Space
- Store size 2,550 sf
- Excellent Access & Visibility
- Route 42 & Ganttown Road
- New Pylon Signage
- Robust retail area

Contact:
Marc Raiken: mraiken@f-mcb.com (856) 489-8887



Disclaimer: The information in this correspondence is deemed correct and accurate from the owner and other sources from which it was obtained. All information is subject to changes, errors, omissions and removal from the market without notice.