

**LEASE! 6-Bay Turn-Key Automotive Service Facility**

*\*5781 Route 42 at Shoppers Lane\*  
Washington Twp. (Turnersville), NJ*



**Building Size**  
4,875+/- Sq. Ft.  
6-Bay Auto Service

**Demographic Snapshot**

(Source: CoStar)

**Population:**

1 mile: 7,974  
3 miles: 73,479  
5 miles: 184,032

**Total Households:**

1 mile: 2,808  
3 miles: 25,918  
5 miles: 68,098

**HH Income:**

1 mile: \$117,669.  
3 miles: \$99,264.  
5 miles: \$89,059.

**NOTES:**

- Join Jiffy Lube!
- Turn-Key 6-Bay Auto Service Center w/ Interior Tire Storage Racking System
- Strong Retail area with Rt. 42 visibility
- Zoning: SC Shopping Center
- Taxes: \$18,000 (Yr. 2023)
- NJDOT Traffic Counts: 48,877 AADT

**More Information?**

**Contact: Marc Raiken [mraiken@f-mcb.com](mailto:mraiken@f-mcb.com)**

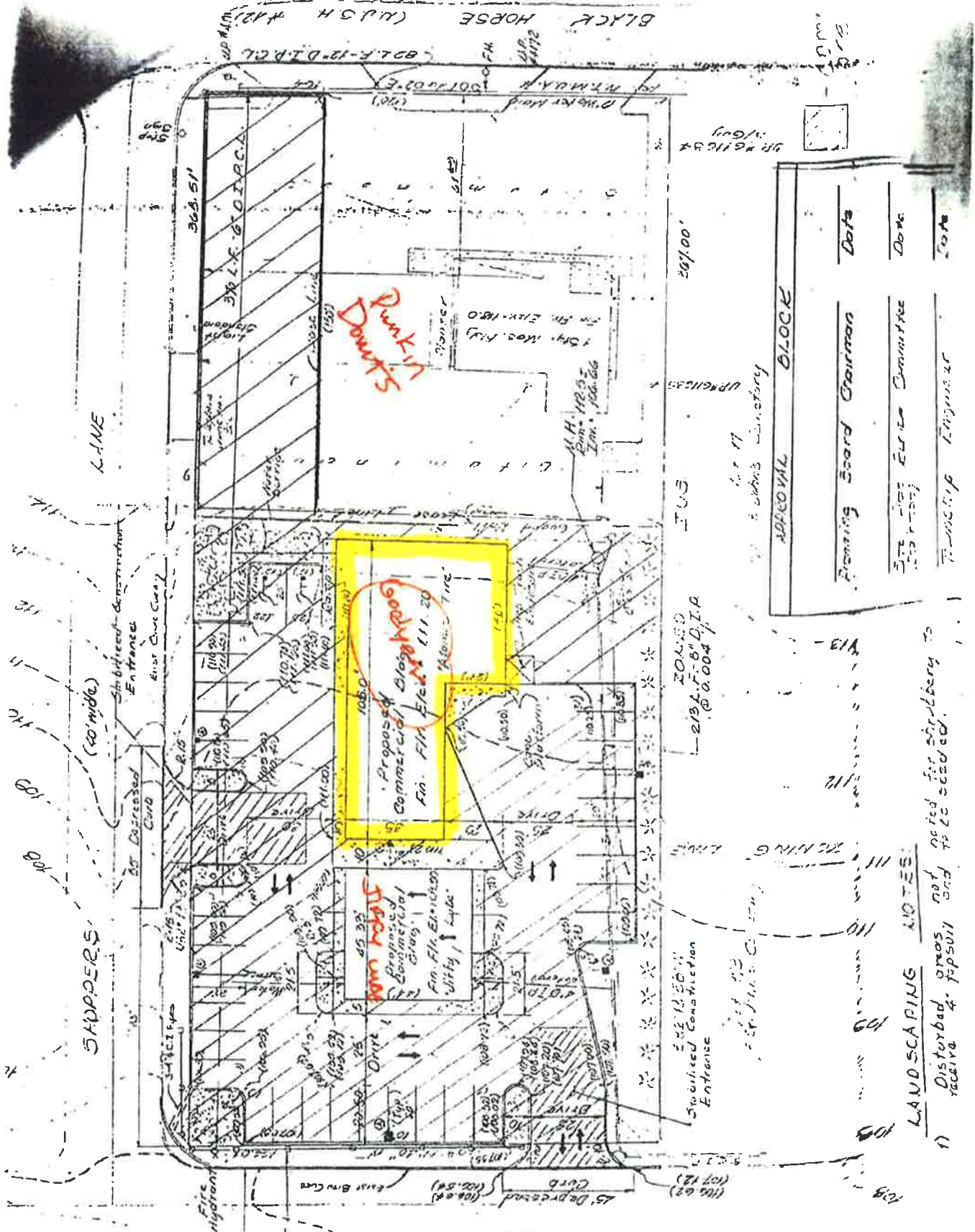


EXHIBIT "A"

Planning Board Chairman	Date
ETS (not ETC Committee)	Date
Trustship Engineer	Date

APPROVAL BLOCK

LANDSCAPING NOTES:

- 1) Disturbance & prep work noted for Shiplery to receive & prep soil and to be seeded.