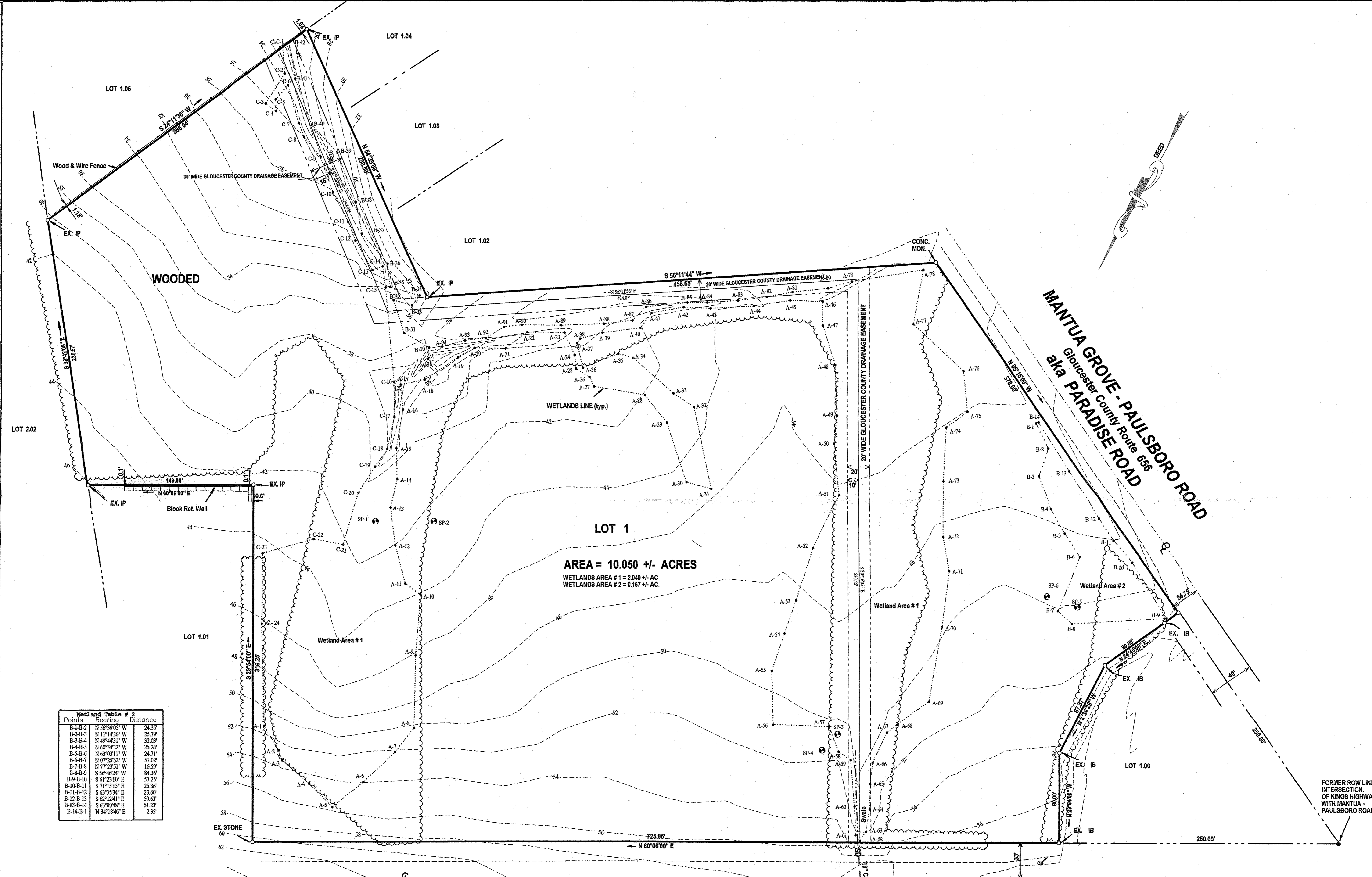


Points	Bearing	Distance
A-1-A-2	N 61°10'49" W	25.04'
A-2-A-3	N 48°07'10" W	9.38'
A-3-A-4	N 79°29'00" W	32.09'
A-4-A-5	N 75°00'15" W	29.67'
A-5-A-6	S 21°22'29" W	35.77'
A-6-A-7	S 16°35'59" W	38.28'
A-7-A-8	S 08°53'15" W	27.35'
A-8-A-9	S 28°48'39" E	64.39'
A-9-A-10	S 25°14'47" E	53.71'
A-10-A-11	S 84°27'39" E	16.70'
A-11-A-12	S 44°50'11" E	34.55'
A-12-A-13	S 37°14'59" E	33.66'
A-13-A-14	S 17°17'30" E	26.69'
A-14-A-15	S 31°27'01" E	27.39'
A-15-A-16	S 19°39'19" E	34.15'
A-16-A-17	S 33°29'36" E	22.01'
A-17-A-18	S 48°42'51" W	21.88'
A-18-A-19	S 26°52'52" W	35.43'
A-19-A-20	S 30°27'18" W	17.29'
A-20-A-21	S 61°21'55" W	27.89'
A-21-A-22	S 23°33'08" W	24.00'
A-22-A-23	S 69°44'26" W	33.57'
A-23-A-24	N 54°43'17" W	21.71'
A-24-A-25	N 35°36'17" W	12.03'
A-25-A-26	N 89°02'01" W	14.02'
A-26-A-27	N 56°39'50" W	9.32'
A-27-A-28	S 69°22'09" W	46.71'
A-28-A-29	N 70°10'03" W	31.28'
A-29-A-30	N 48°40'45" W	55.08'
A-30-A-31	S 75°24'51" W	23.32'
A-31-A-32	S 42°18'59" E	73.79'
A-32-A-33	S 87°31'21" E	21.86'
A-33-A-34	S 79°49'29" E	48.40'
A-34-A-35	N 72°48'54" E	141.77'
A-35-A-36	N 39°00'08" E	33.72'
A-36-A-37	S 43°52'11" E	21.89'
A-37-A-38	S 02°33'34" W	4.79'
A-38-A-39	S 45°11'03" W	20.69'
A-39-A-40	S 52°45'45" W	35.07'
A-40-A-41	S 07°59'46" W	16.40'
A-41-A-42	S 49°40'45" W	29.31'
A-42-A-43	S 62°41'57" W	24.89'
A-43-A-44	S 56°44'29" W	39.22'
A-44-A-45	S 51°41'01" W	32.85'
A-45-A-46	S 61°48'34" W	29.51'
A-46-A-47	N 30°34'46" W	21.07'
A-47-A-48	N 47°43'08" W	36.14'
A-48-A-49	N 32°29'46" W	44.59'
A-49-A-50	N 23°20'53" W	24.41'
A-50-A-51	N 35°40'23" W	46.10'
A-51-A-52	N 03°56'45" W	53.27'
A-52-A-53	N 11°20'34" W	48.12'
A-53-A-54	N 09°57'26" W	30.83'
A-54-A-55	N 11°33'18" W	34.84'
A-55-A-56	N 31°49'34" W	47.61'
A-56-A-57	N 51°54'53" W	50.02'
A-57-A-58	N 51°45'02" W	23.93'
A-58-A-59	N 86°11'22" W	13.33'
A-59-A-60	N 34°33'07" W	41.23'
A-60-A-61	N 31°33'15" W	25.73'
A-61-A-62	N 68°54'57" W	6.37'
A-62-A-63	S 02°42'10" W	9.88'
A-63-A-64	S 20°11'52" E	20.21'
A-64-A-65	S 28°29'52" E	22.32'
A-65-A-66	S 23°59'21" E	18.98'
A-66-A-67	S 04°28'09" E	29.57'
A-67-A-68	S 21°59'51" W	11.73'
A-68-A-69	S 24°24'28" W	34.64'
A-69-A-70	S 19°29'21" W	65.73'
A-70-A-71	S 22°21'48" E	49.54'
A-71-A-72	S 40°05'20" E	30.30'
A-72-A-73	S 29°49'35" E	50.57'
A-73-A-74	S 26°42'31" E	47.13'
A-74-A-75	S 24°08'18" W	23.47'
A-75-A-76	S 36°04'04" E	35.78'
A-76-A-77	S 77°40'30" E	61.20'
A-77-A-78	S 19°54'31" E	46.60'
A-78-A-79	N 51°02'40" E	64.99'
A-79-A-80	N 43°58'00" E	22.20'
A-80-A-81	N 53°58'04" E	32.12'
A-81-A-82	N 49°35'46" E	23.54'
A-82-A-83	N 52°59'29" E	26.04'
A-83-A-84	N 56°30'40" E	27.88'
A-84-A-85	N 59°37'54" E	17.74'
A-85-A-86	N 54°26'21" E	37.33'
A-86-A-87	N 16°02'22" E	17.42'
A-87-A-88	N 53°21'06" E	25.96'
A-88-A-89	N 57°56'28" E	38.47'
A-89-A-90	N 60°31'57" E	35.57'
A-90-A-91	N 53°57'44" E	15.71'
A-91-A-92	N 29°11'35" E	18.99'
A-92-A-93	N 53°40'03" E	19.14'
A-93-A-94	N 45°28'00" E	21.02'
A-94-A-95	N 18°48'38" E	16.45'
A-95-B-30	S 24°47'34" E	9.93'
B-30-B-31	S 89°21'5" E	25.72'
B-31-B-32	S 48°44'39" E	30.23'
B-32-B-33	S 74°53'25" W	17.05'
B-33-B-34	S 08°36'58" W	10.99'
B-34-B-35	N 75°48'59" E	27.40'
B-35-B-36	S 37°08'41" E	20.83'
B-36-B-37	S 70°15'15" E	34.68'
B-37-B-38	S 42°04'20" E	28.27'
B-38-B-39	S 59°54'3" E	46.19'
B-39-B-40	S 73°28'49" E	33.92'
B-40-B-41	S 49°54'38" E	43.49'
B-41-B-42	S 39°33'38" E	33.05'
B-42-C-1	N 28°27'32" E	6.70'
C-1-C-2	N 34°27'24" W	24.69'
C-2-C-3	N 03°14'49" E	31.45'
C-3-C-4	N 84°39'28" W	11.65'
C-4-C-5	S 33°10'22" E	10.28'
C-5-C-6	S 11°48'20" W	16.75'
C-6-C-7	N 46°06'44" W	34.62'
C-7-C-8	N 51°40'17" W	13.19'
C-8-C-9	N 70°40'43" W	22.90'
C-9-C-10	N 49°44'58" W	33.99'
C-10-C-11	N 58°03'51" W	29.67'
C-11-C-12	N 51°21'48" W	17.69'
C-12-C-13	N 60°12'24" W	30.19'
C-13-C-14	S 39°31'51" W	4.53'
C-14-C-15	N 38°07'05" W	18.80'
C-15-C-16	N 35°26'33" W	83.54'
C-16-C-17	N 30°18'44" W	30.42'
C-17-C-18	N 16°22'15" W	28.49'
C-18-C-19	N 04°28'21" E	18.86'
C-19-C-20	N 02°34'05" E	27.88'
C-20-C-21	N 13°48'41" E	48.34'
C-21-C-22	N 70°37'29" E	26.87'
C-22-C-23	N 44°59'29" E	47.49'
C-23-C-24	N 29°37'35" W	61.47'
C-24-A-1	N 31°13'46" W	90.91'

Points	Bearing	Distance
B-1-B-2	N 56°39'05" W	24.35'
B-2-B-3	N 11°14'26" W	25.79'
B-3-B-4	N 49°44'31" W	32.03'
B-4-B-5	N 69°34'22" W	25.24'
B-5-B-6	N 63°03'11" W	24.71'
B-6-B-7	N 07°25'32" W	51.02'
B-7-B-8	N 77°23'51" W	16.59'
B-8-B-9	S 56°46'24" W	84.36'
B-9-B-10	S 61°23'10" E	57.25'
B-10-B-11	S 71°15'15" E	25.36'
B-11-B-12	S 63°35'34" E	23.60'
B-12-B-13	S 62°12'41" E	50.63'
B-13-B-14	S 63°03'08" E	51.23'
B-14-B-1	N 34°18'46" E	2.35'

Wetlands as delineated by Makofka Environmental Consulting, LLC., 1385 Highway 35 & 232, Middletown, N.J. 07748

Wetlands flags indicated by A-1 - A-2 etc. Soil borings for wetland delineation shown as SP-1 thru SP-6.



**WOODBURY - SWEDESBORO ROAD**  
**aka KINGS HIGHWAY (66' WIDE)**  
 Gloucester County Route 551

WETLANDS DELINEATION PLAN FOR  
 FEINBERG & McBURNEY INVESTMENT CO.

WEST DEPTFORD TOWNSHIP  
 GLOUCESTER COUNTY  
 TAX MAP BLOCK 353 LOT 1

SCALE = 1" = 40'    DATE: Oct 13, 2007

JOHN H. DATZ  
 PROFESSIONAL ENGINEER & LAND SURVEYOR  
 N. J. LICENSE # 12052  
 89 WOODLAND AVENUE MULICA HILL, N.J. 08062  
 PHONE / FAX 478-2153